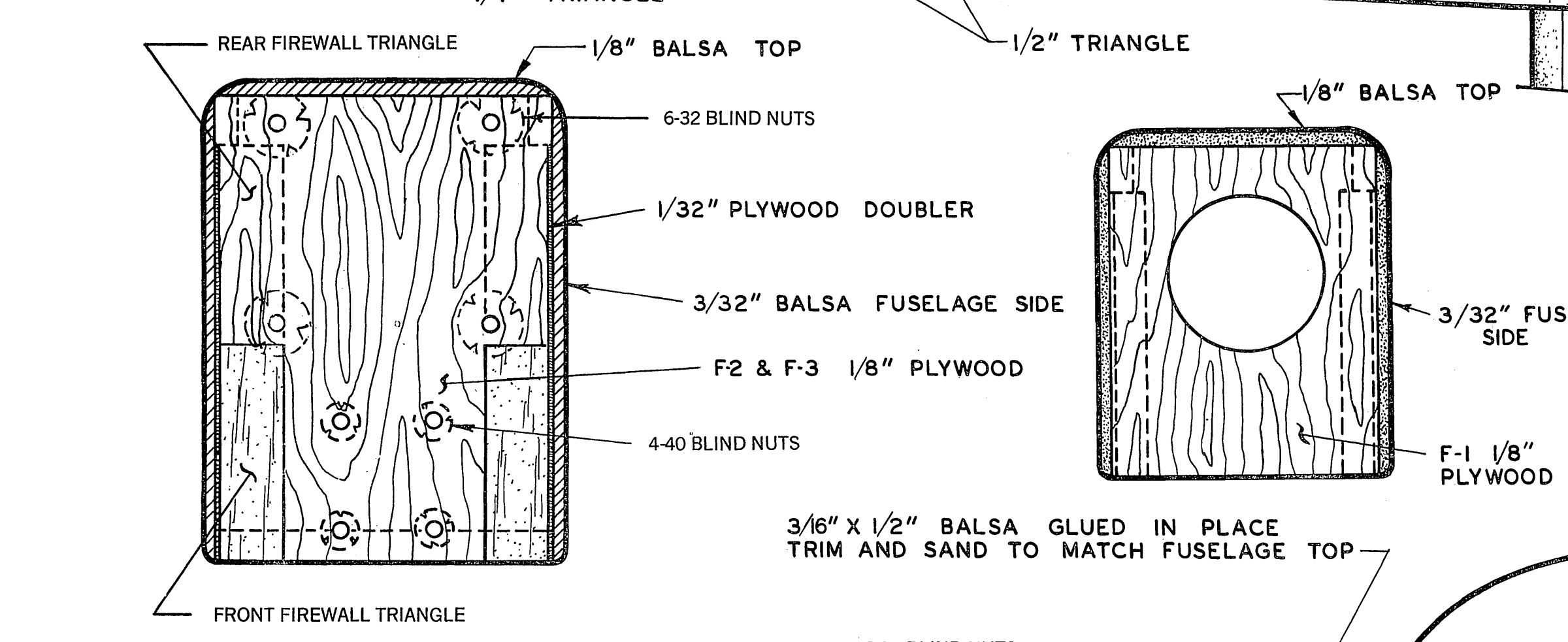
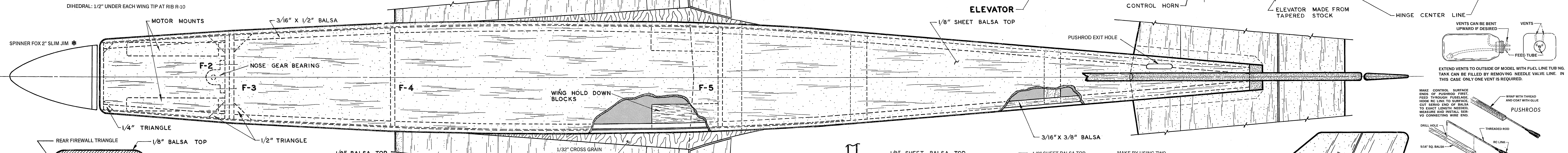
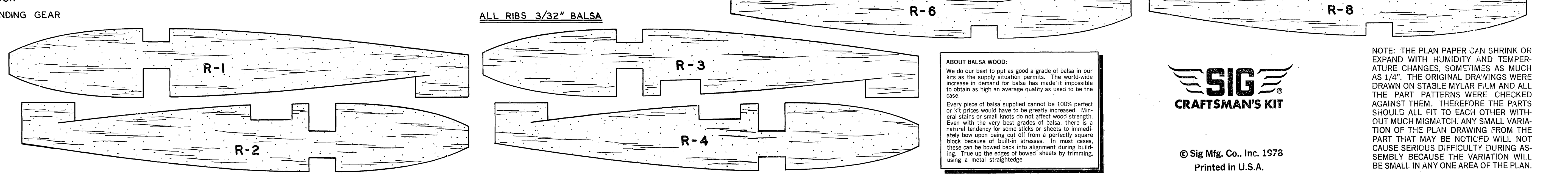
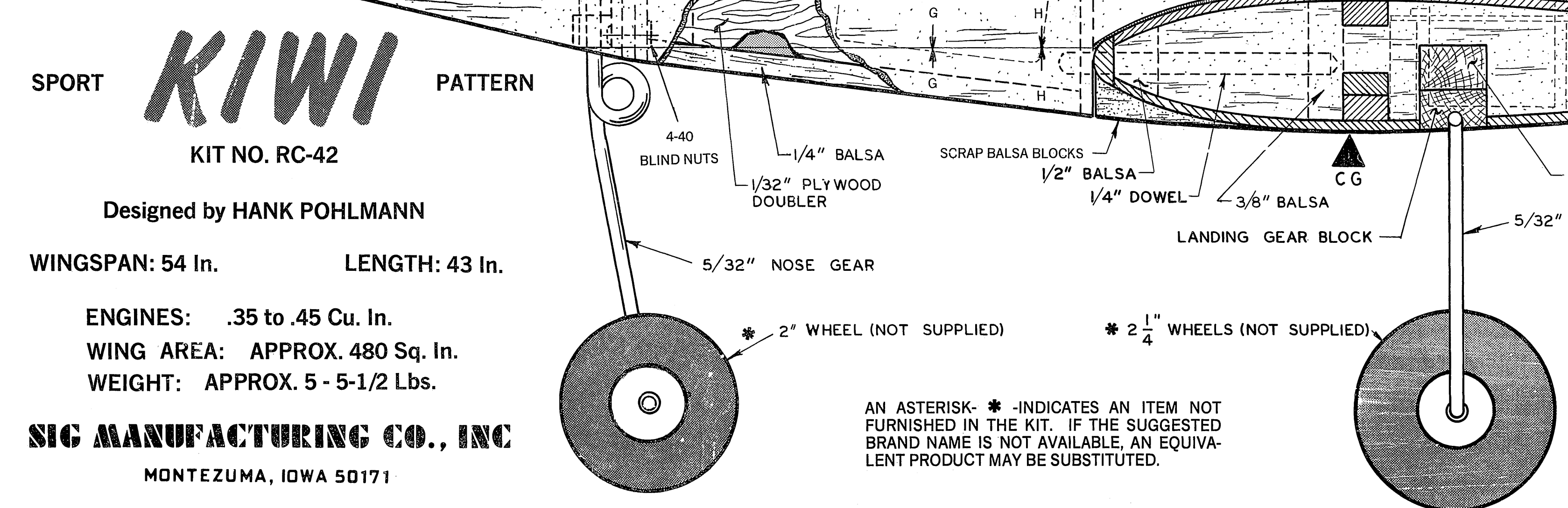
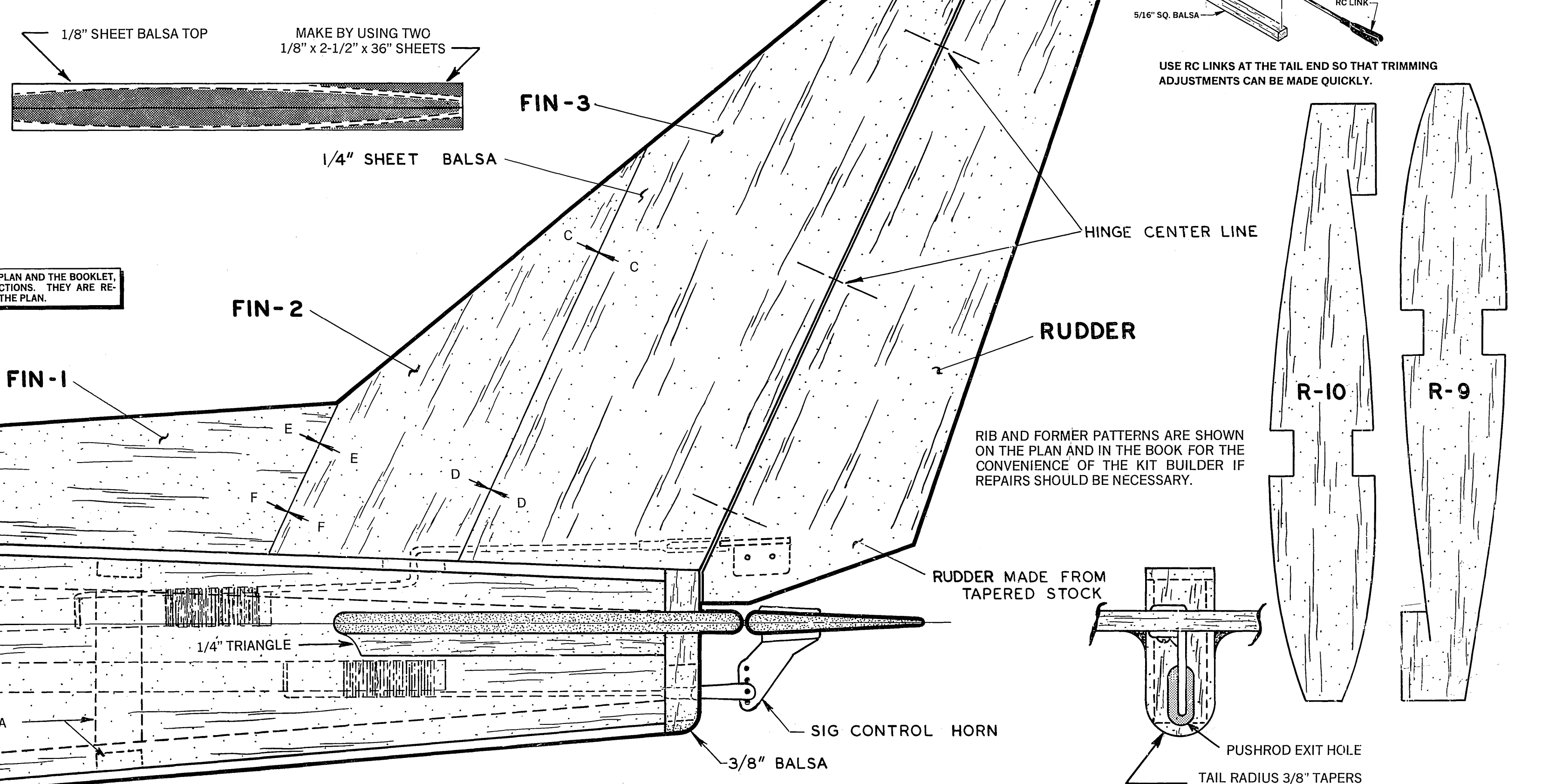
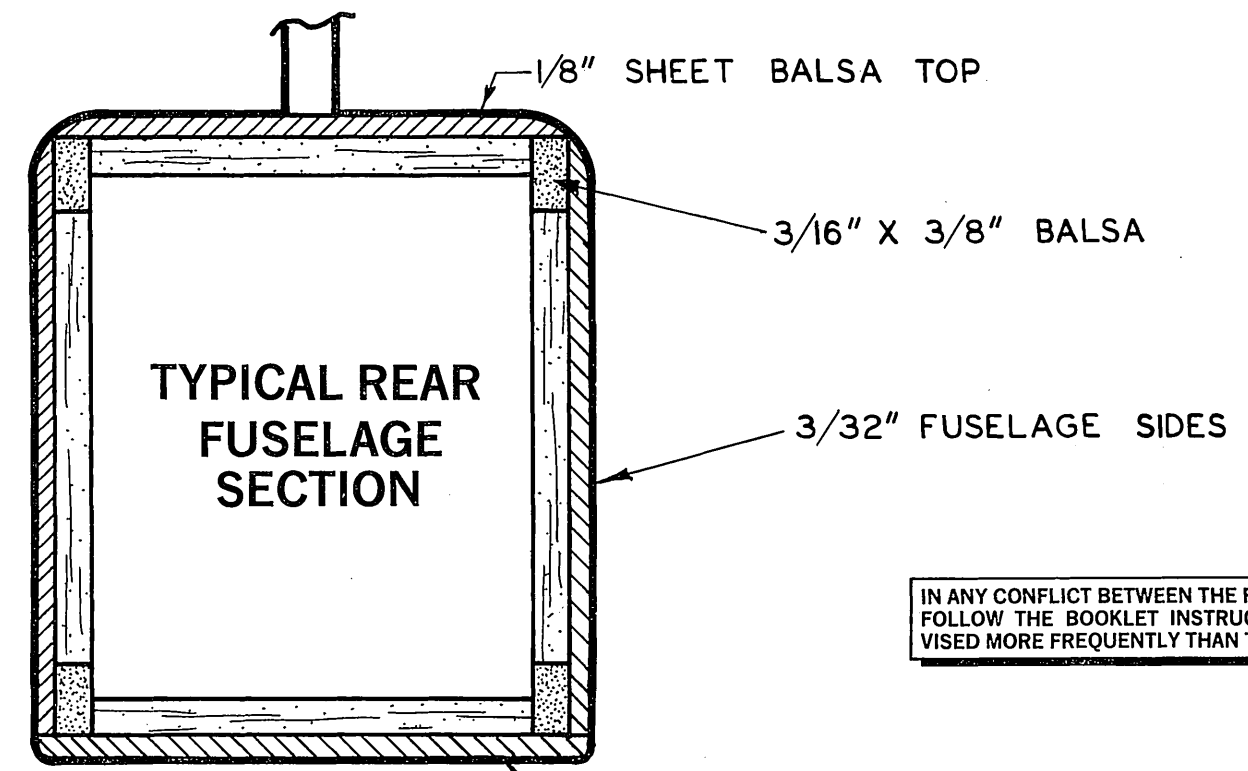


**WARNING-DANGER!**  
DO NOT FLY MODEL AIRPLANES NEAR ELECTRIC POWER LINES. INSTANT DEATH CAN RESULT FROM CONTACT WITH OR FLYING TOO CLOSE TO ELECTRIC POWER LINES.



**OIL PROOF YOUR MODEL!**  
One of the most destructive things that can happen to a model is allowing engine oil to seep into bare, untreated balsa or plywood. It will cause glass joints to loosen and result in a steady increase in weight. An oil soaked model cannot be properly repaired or re-painted after a crash-up, since glue and finish will not hold. Cover all wood parts of the model and put on enough coats of finish so that oil cannot soak in. Don't leave any exposed wood on the outside. Around the nose and engine compartment, apply extra effort at oil proofing. Coating the firewall and front joints with epoxy glue is best, but several extra coats of dope or paint will also do the job. Take special care during building to use plenty of epoxy glue to attach the firewall and coat the back of the firewall and the firewall braces with the glue. Fill any cracks with epoxy.



**SPORT KIWI PATTERN**  
KIT NO. RC-42  
Designed by HANK POHLMANN  
WINGSPAN: 54 In. LENGTH: 43 In.  
ENGINES: .35 to .45 Cu. In.  
WING AREA: APPROX. 480 Sq. In.  
WEIGHT: APPROX. 5 - 5 1/2 Lbs.  
**SIG MANUFACTURING CO., INC**  
MONTEZUMA, IOWA 50171

**ABOUT Balsa WOOD:**  
We do our best to put out a good grade of balsa in our kits as the hobby standard demands. The woodworkers are selected for their quality. If you need to obtain as high an average quality as used to be the case. Every piece of balsa supplied cannot be 100% perfect. It is never wood that is perfectly straight. Knots, grain, and small knots do not affect wood strength. Even with the very best grades of balsa, there is a natural tendency for some knots or sheets to immediately show upon being cut off from a perfectly square piece. These can be bowed back into alignment during building. Try all the edges of balsa sheets by trimming with a metal straightedge.

**SIG CRAFTSMAN'S KIT**  
NOTE: THE PLAN PAPER CAN SHRINK OR EXPAND WITH HUMIDITY AND TEMPERATURE CHANGES. SOMETIMES AS MUCH AS 1/4". THE ORIGINAL DRAWINGS WERE DRAWN ON STABLE MYLAR FILM AND ALL THE PART PATTERNS WERE CHECKED AGAINST THEM. THEREFORE THE PARTS SHOULD ALL FIT TO EACH OTHER WITHOUT MUCH MISMATCH. ANY SMALL VARIATION OF THE PLAN DRAWING FROM THE PART THAT MAY BE NOTICED WILL NOT CAUSE SERIOUS DIFFICULTY DURING ASSEMBLY BECAUSE THE VARIATION WILL BE SMALL IN ANY ONE AREA OF THE PLAN.